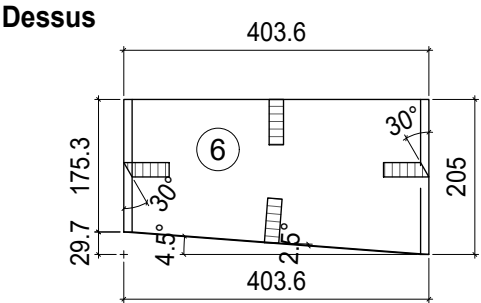
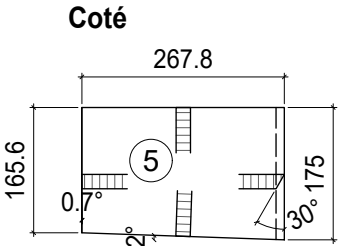
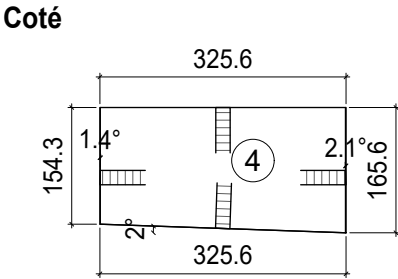
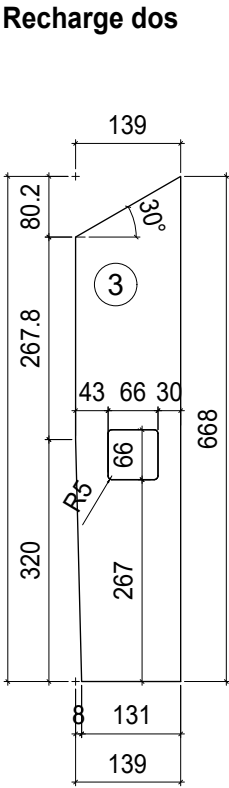
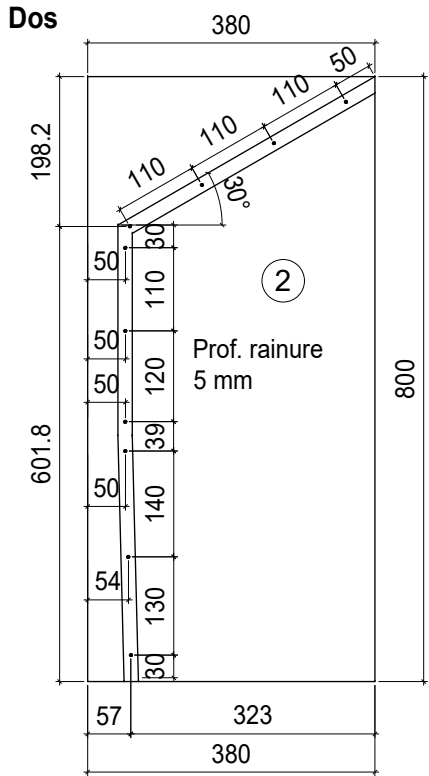
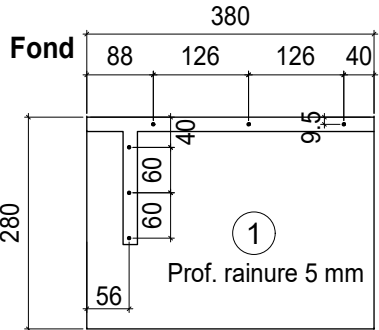
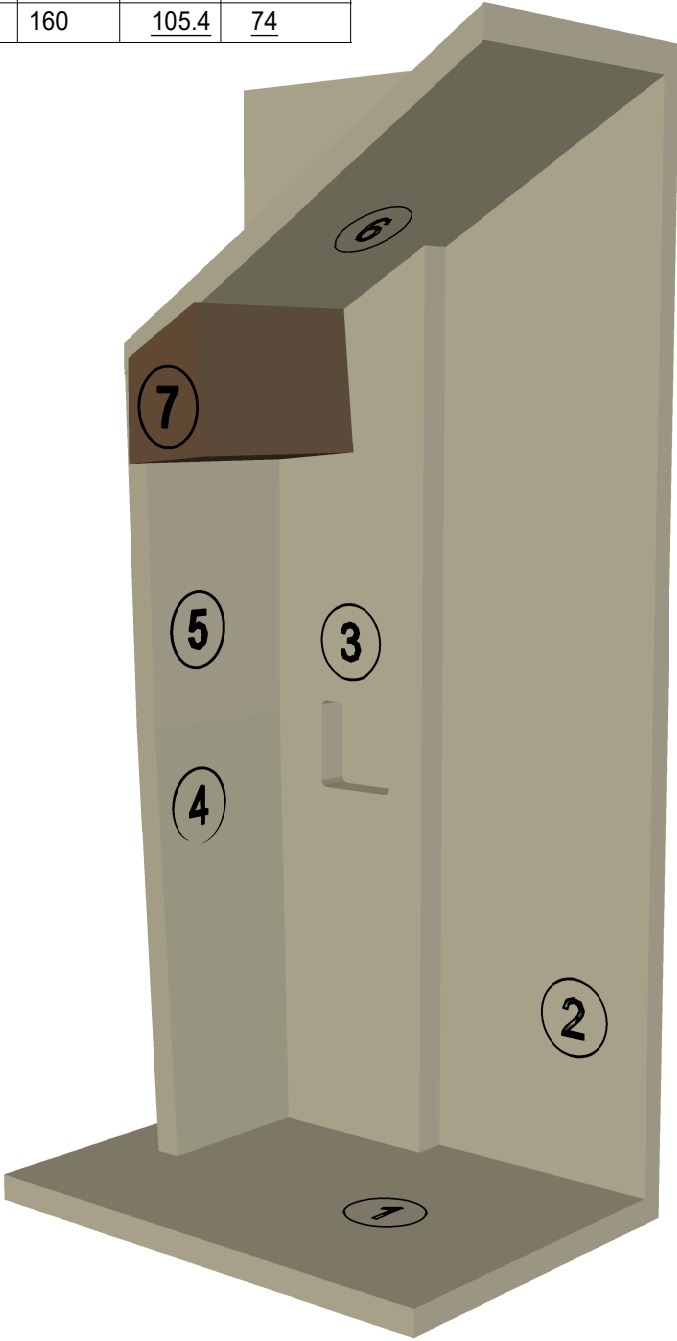


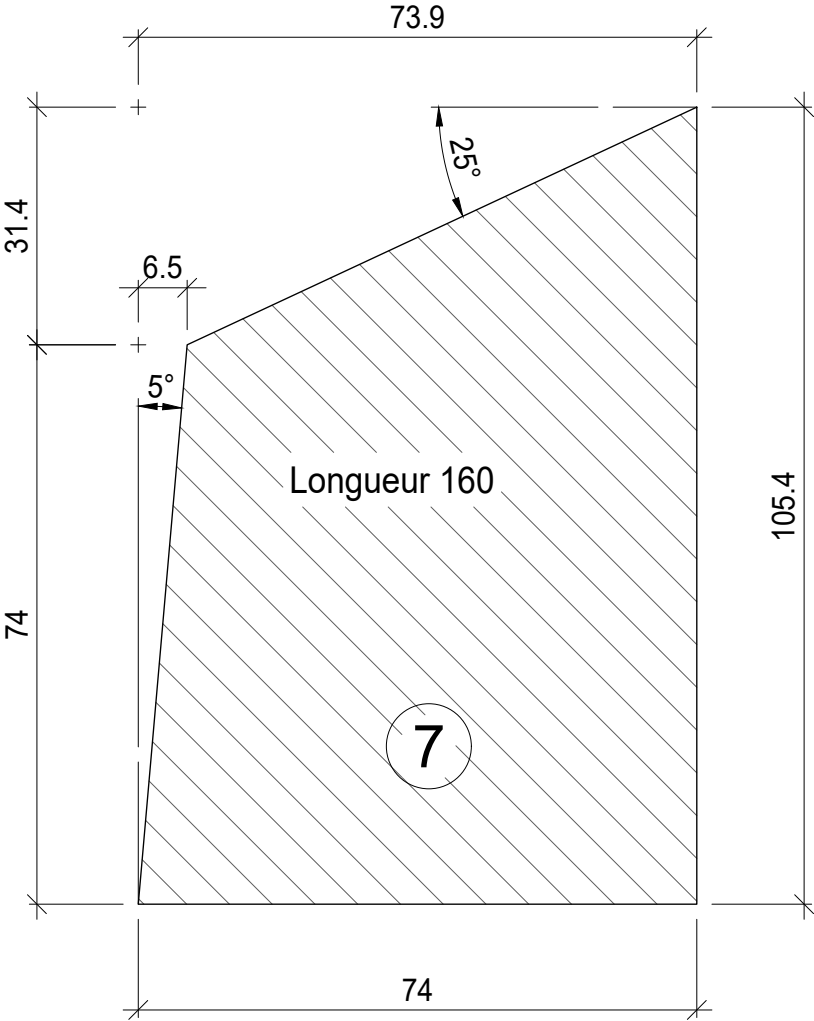
Maquette d'ajustage

| Liste de matériaux | Mat. | Pce. | Long. | Larg. | Ep. |
|--------------------|------|------|-------|-------|-----|
| Fond 1             | MDF  | 1    | 380   | 280   | 19  |
| Dos 2              | MDF  | 1    | 800   | 380   | 19  |
| Recharge dos 3     | MDF  | 1    | 668   | 139   | 19  |
| Coté 4             | MDF  | 1    | 325.6 | 165.6 | 19  |
| Coté 5             | MDF  | 1    | 267.8 | 175   | 19  |
| Dessus 6           | MDF  | 1    | 403.6 | 205   | 19  |
| Recharge 7         | L    | 1    | 160   | 105.4 | 74  |

Fichier DXF inclu.  
Plan pour la fabrication CNC



Section recharge. 1:1



Uniquement pour la préparation interne.  
La maquette doit-être fixée verticalement.  
Plan pour la fabrication à la CNC.